

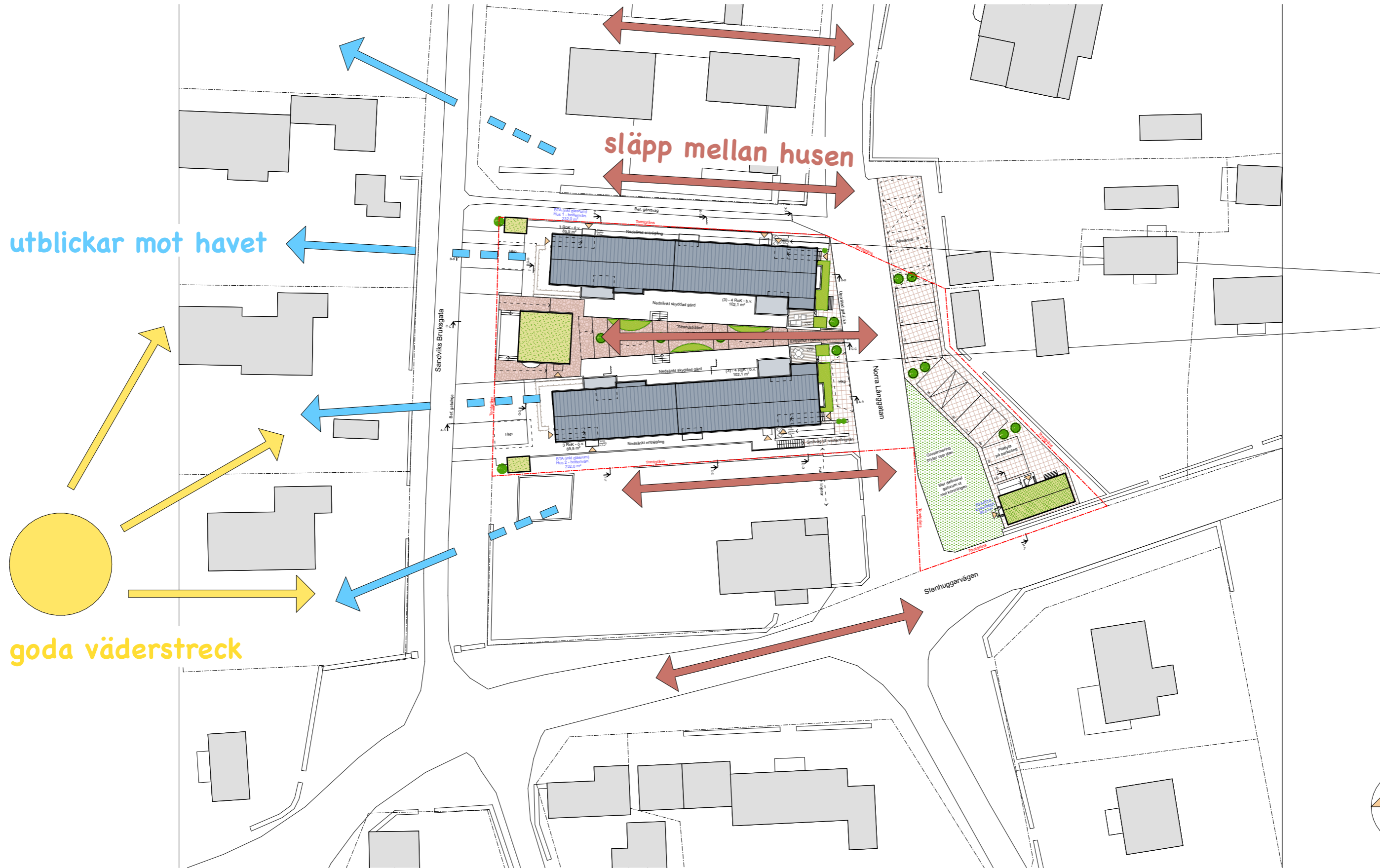


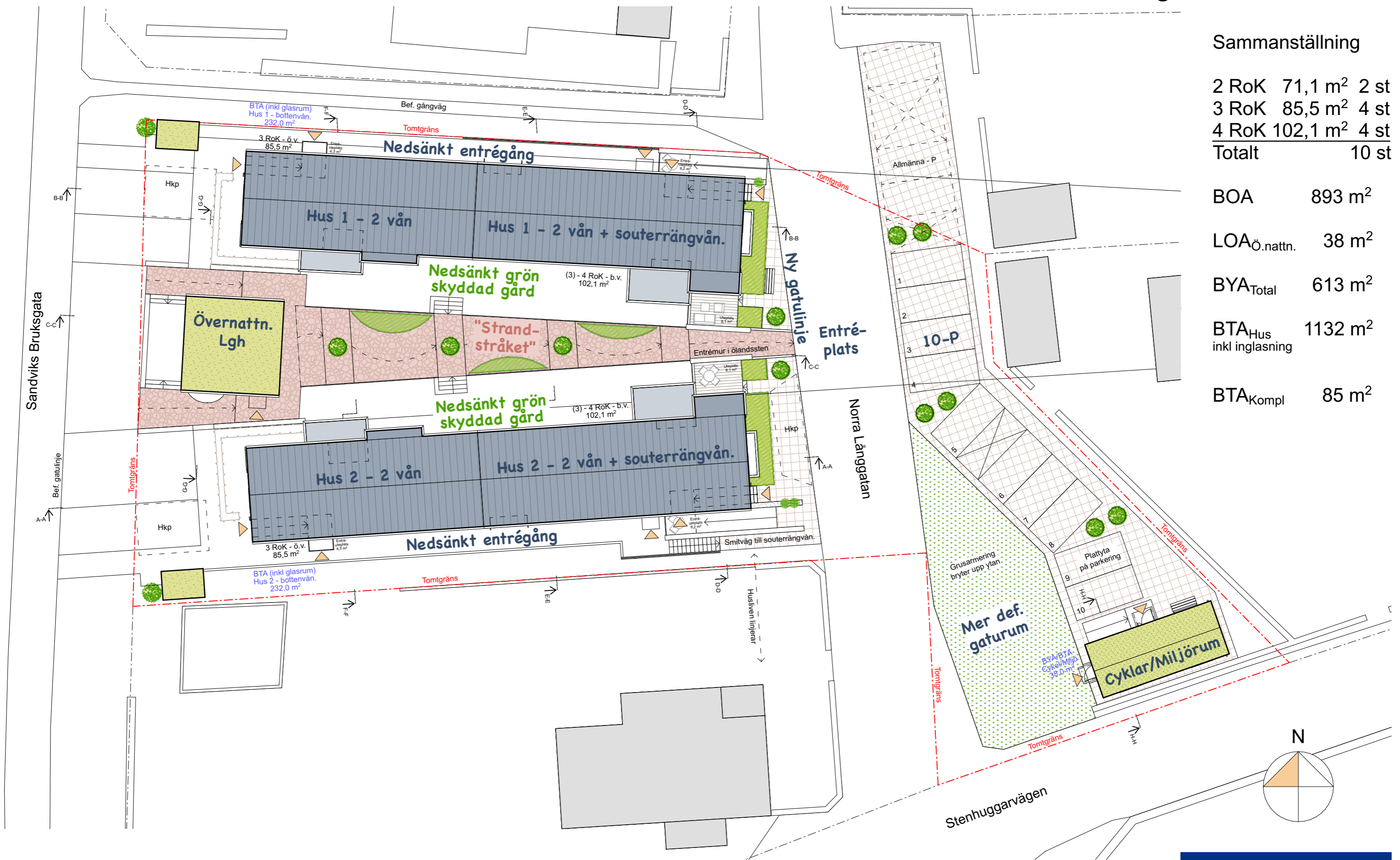
Stenninge 2:10 - Sandvik

Nybyggnad av havsnära bostadsrätter



Vy från Norra Långgatan





Sammanställning

2 RoK	71,1 m ²	2 st
3 RoK	85,5 m ²	4 st
4 RoK	102,1 m ²	4 st
Totalt		10 st

BOA 893 m²

LOA_{Ö.nattn.} 38 m²

BYA_{Total} 613 m²

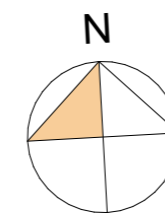
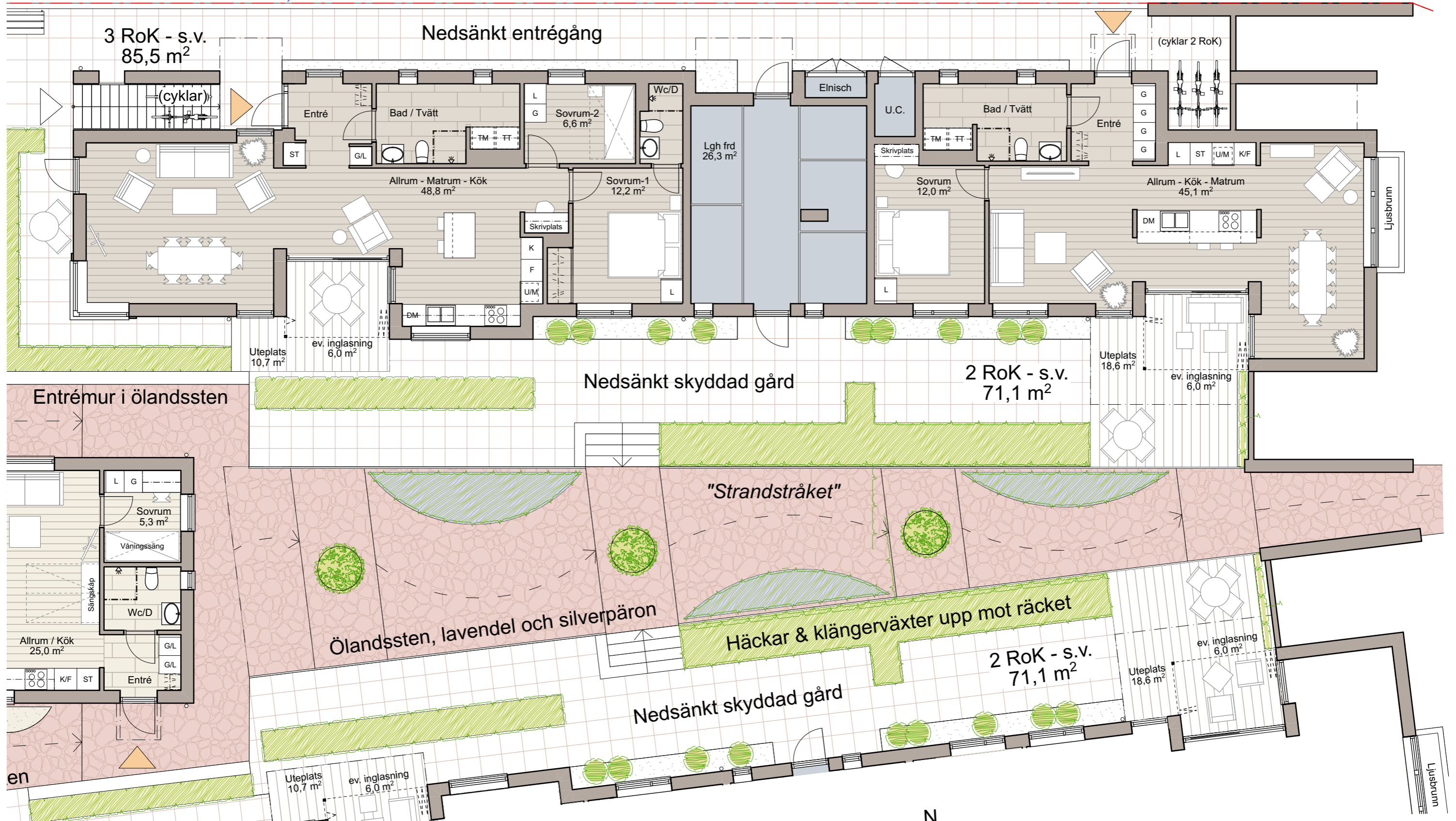
BTA_{Hus} inkl inglasning 1132 m²

BTA_{Kompl} 85 m²

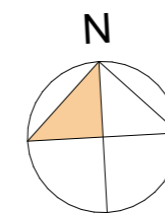
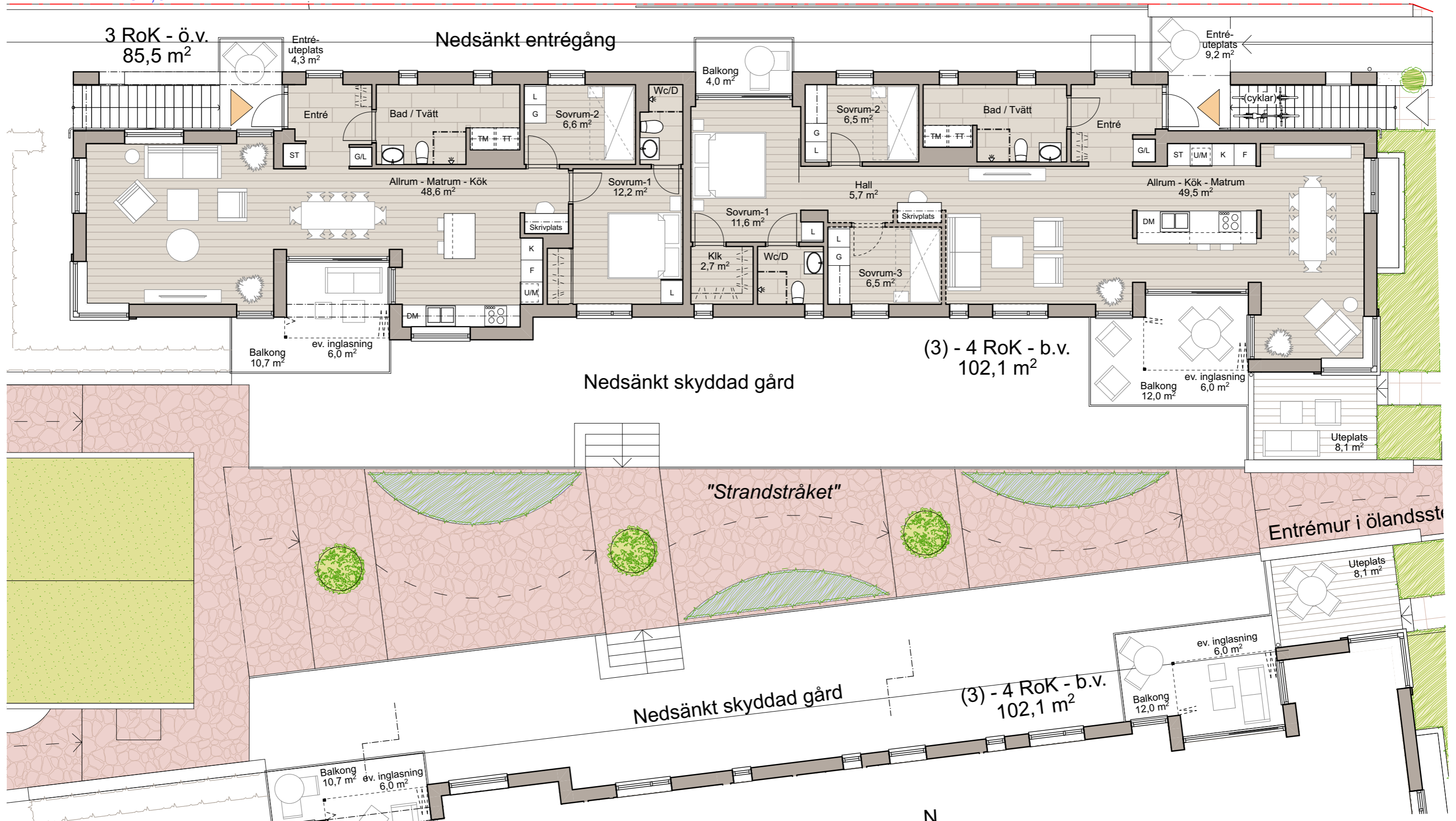
BYA -
264,1 m²

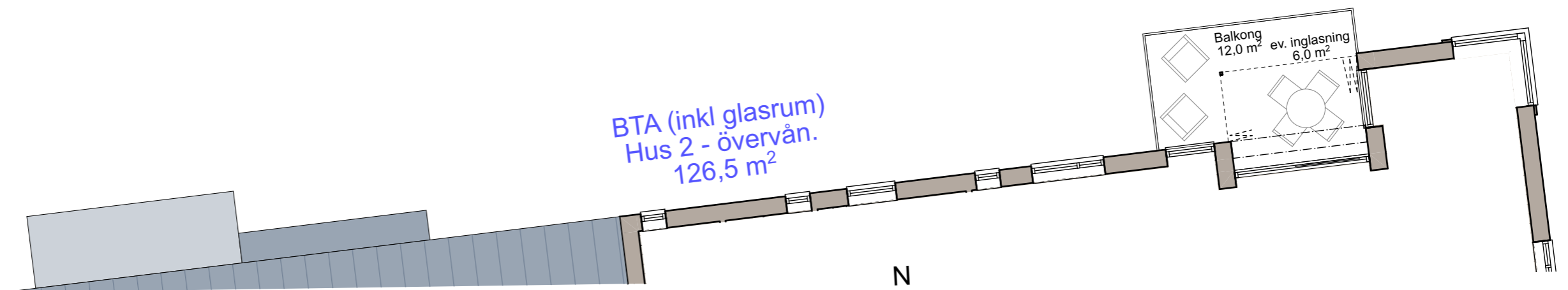
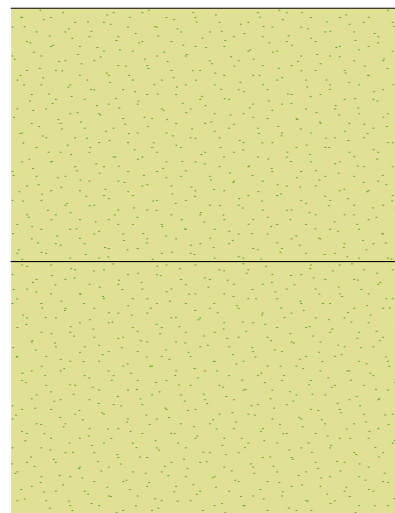
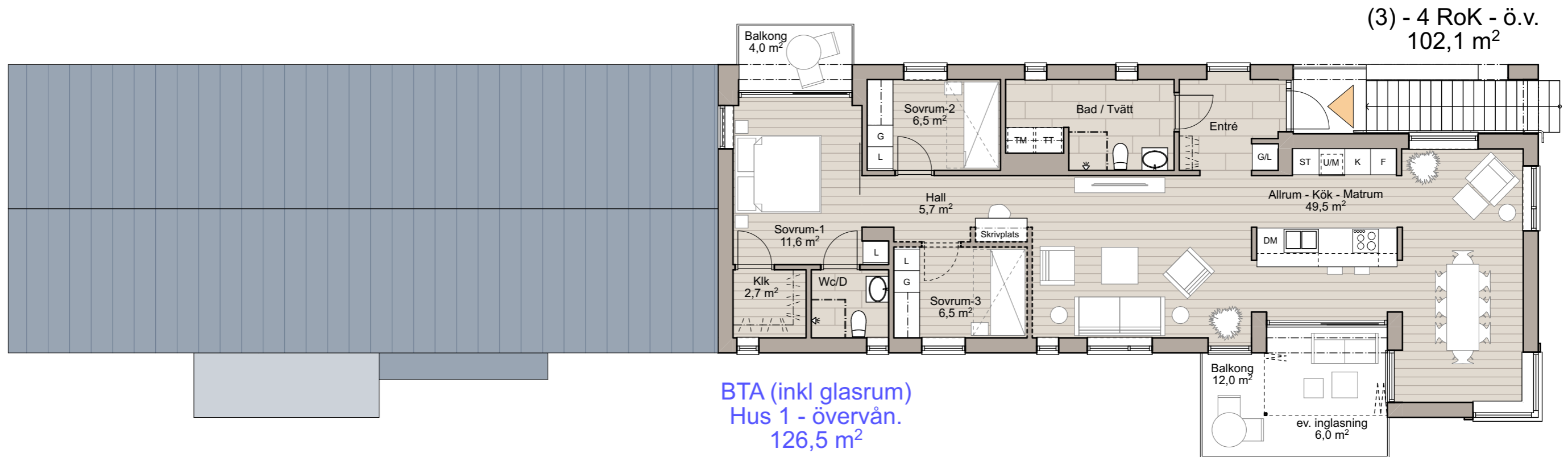
BTA (inkl glasrum)
Hus 1 - souterrängvån.
232,0 m²

Tomtgräns

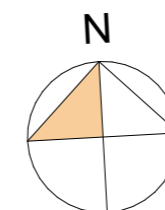


BTA (inkl glasrum)
Hus 1 - bottenvån.
232,0 m²

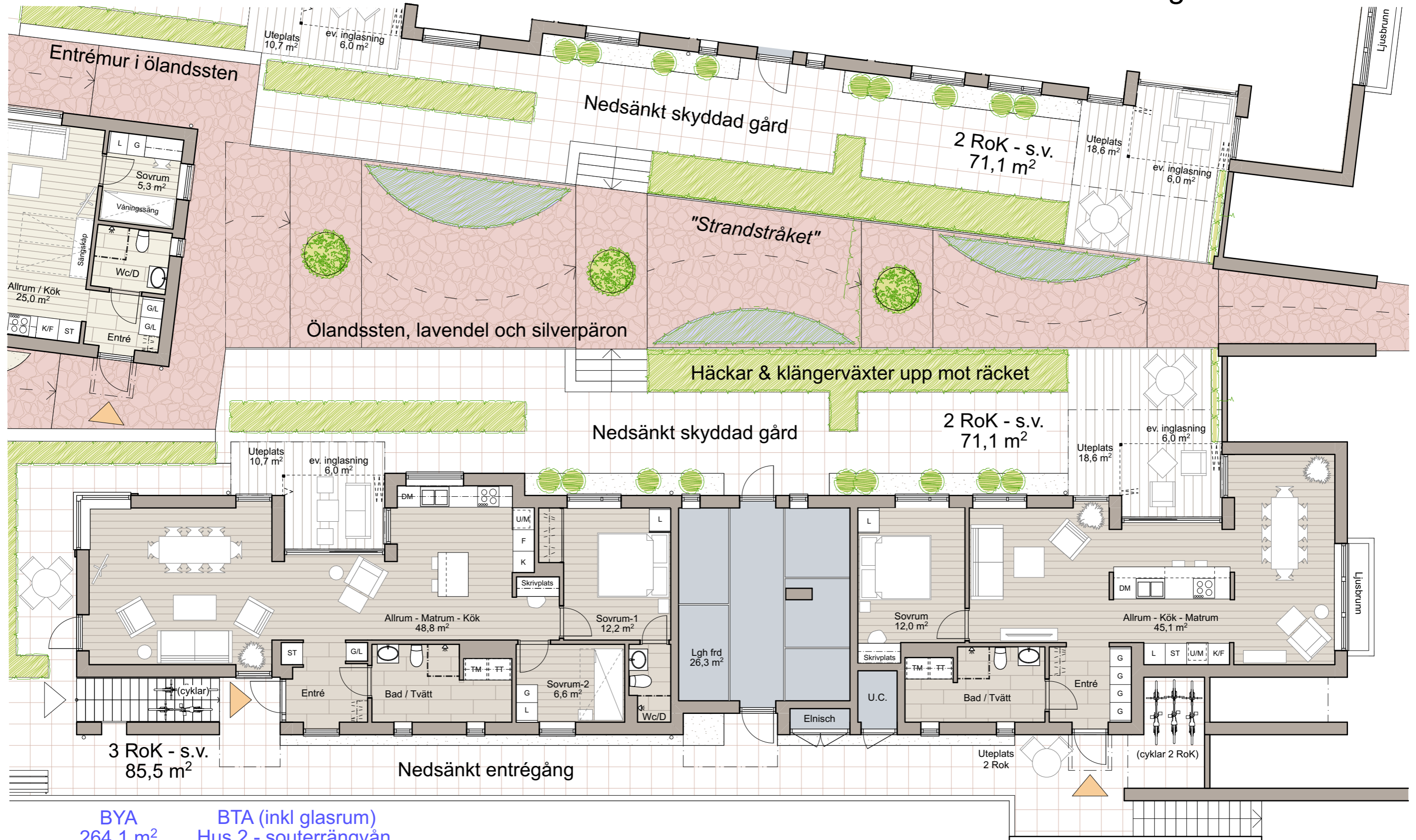




Övervåning - Hus 1
Skala 1:100

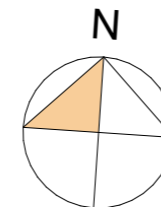


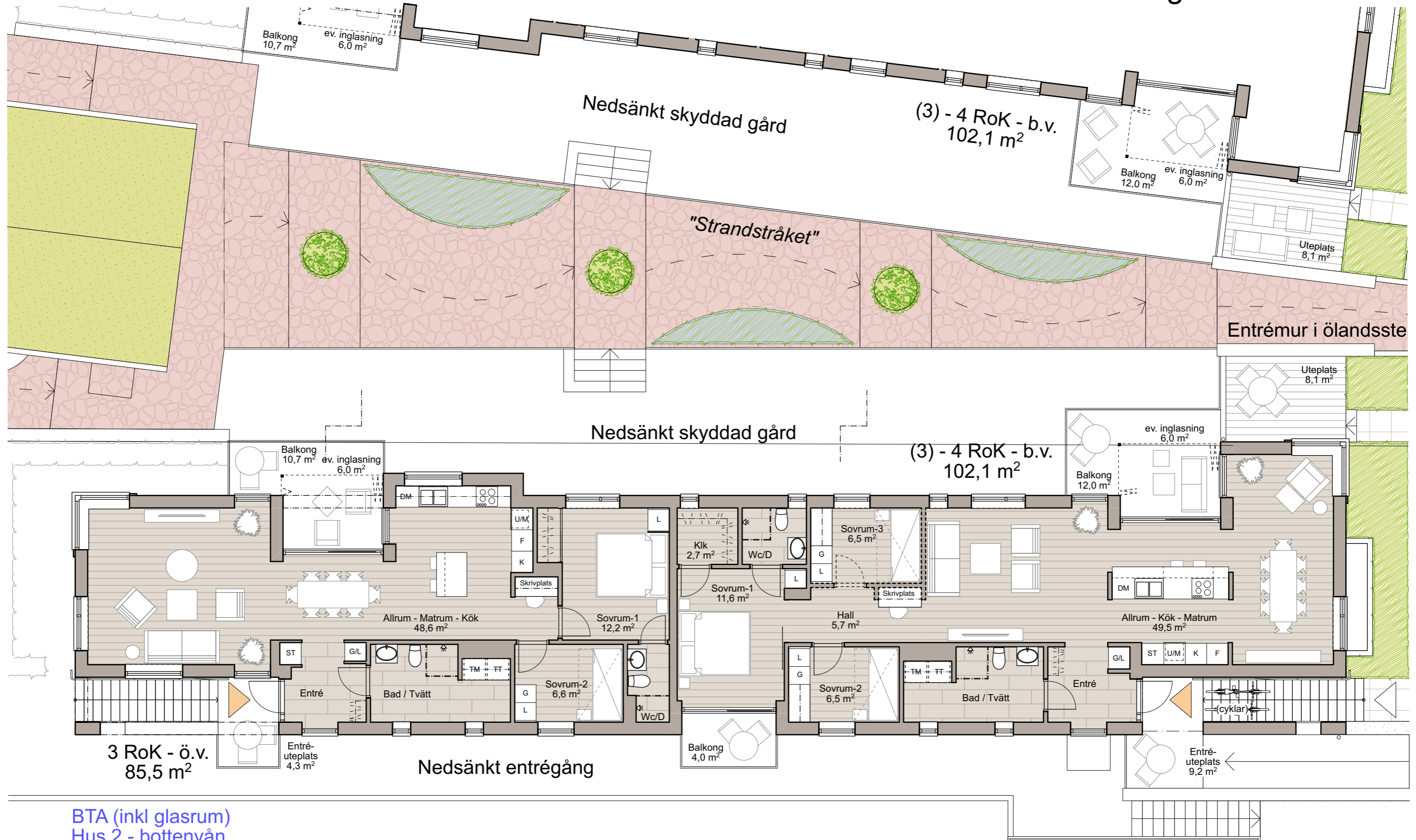
2023-03-13



BYA
264,1 m²

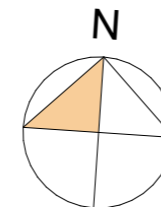
BTA (inkl glasrum)
Hus 2 - souterrängvån.
232,0 m²

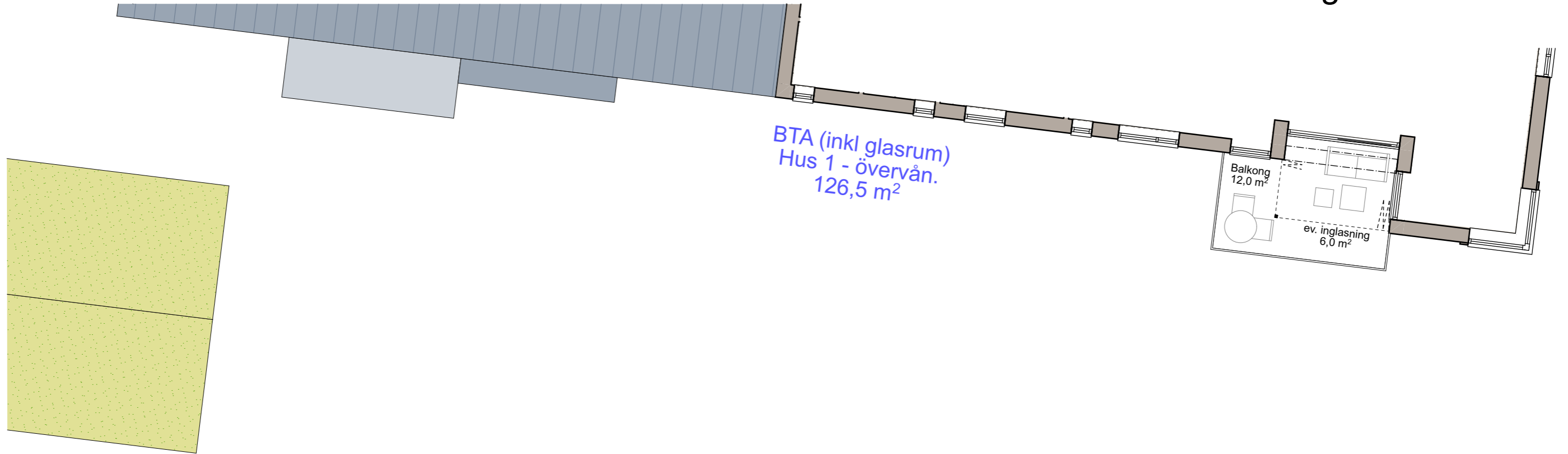




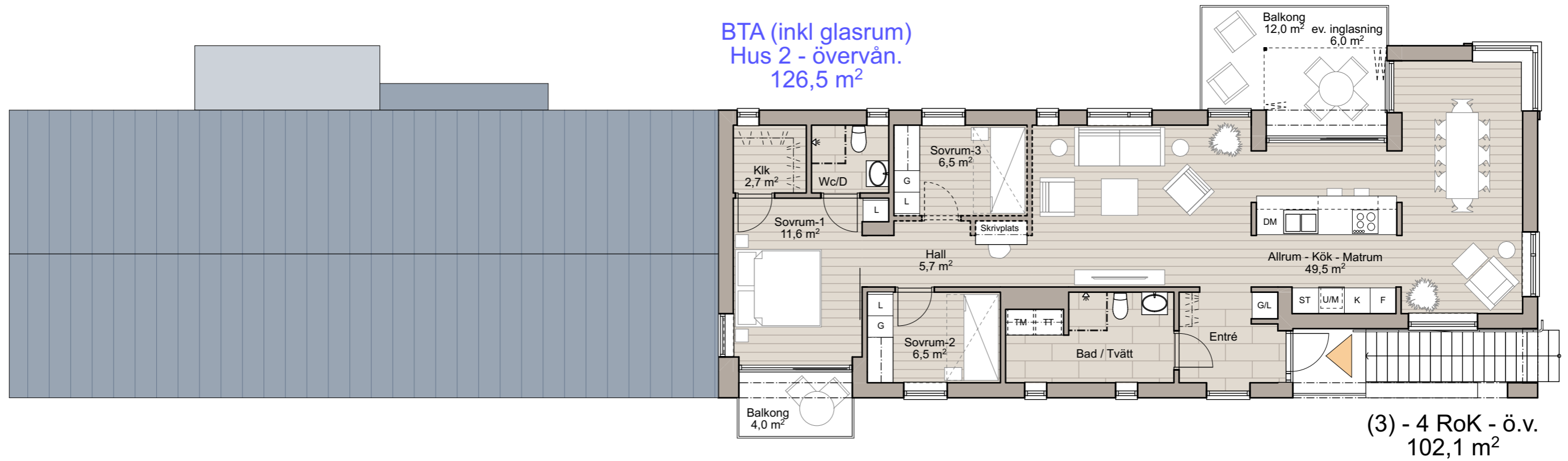
BTA (inkl glasrum)
 Hus 2 - bottenvån.
 232,0 m²

Bottenvåning - Hus 2
 Skala 1:100



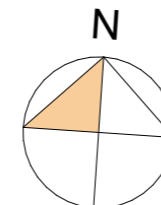


BTA (inkl glasrum)
Hus 1 - övervån.
126,5 m²

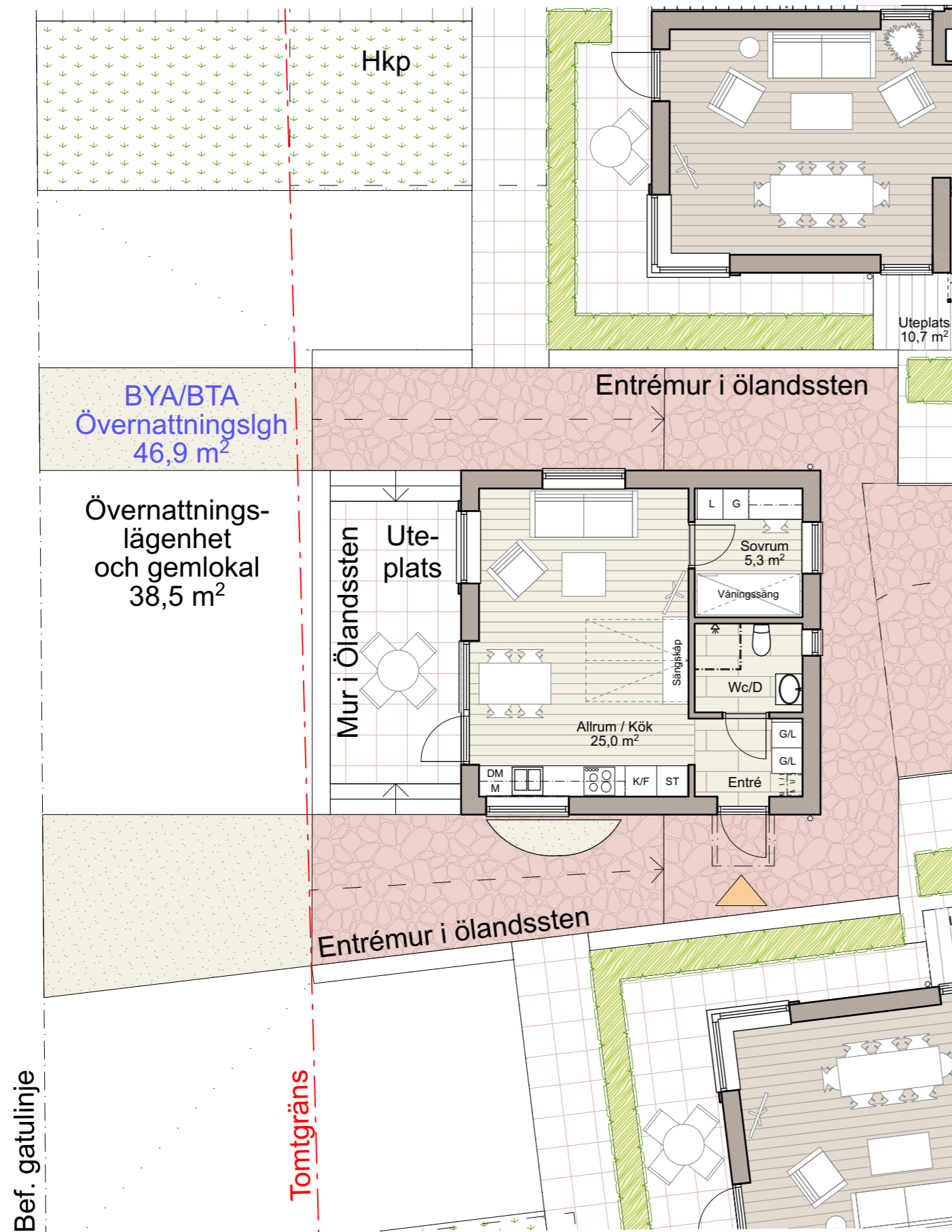


BTA (inkl glasrum)
Hus 2 - övervån.
126,5 m²

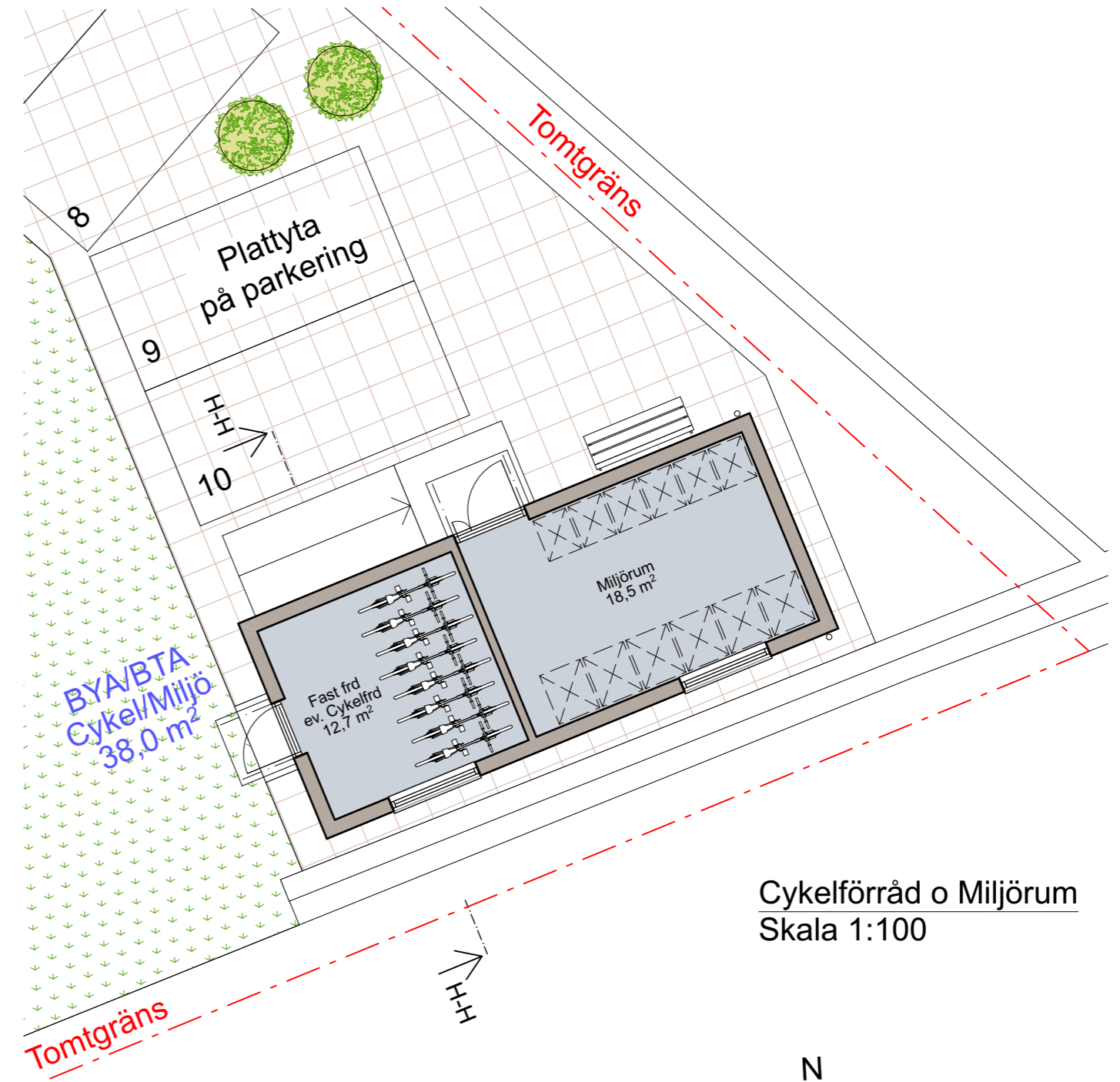
(3) - 4 RoK - ö.v.
102,1 m²



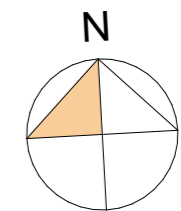
Övervåning - Hus 2
Skala 1:100

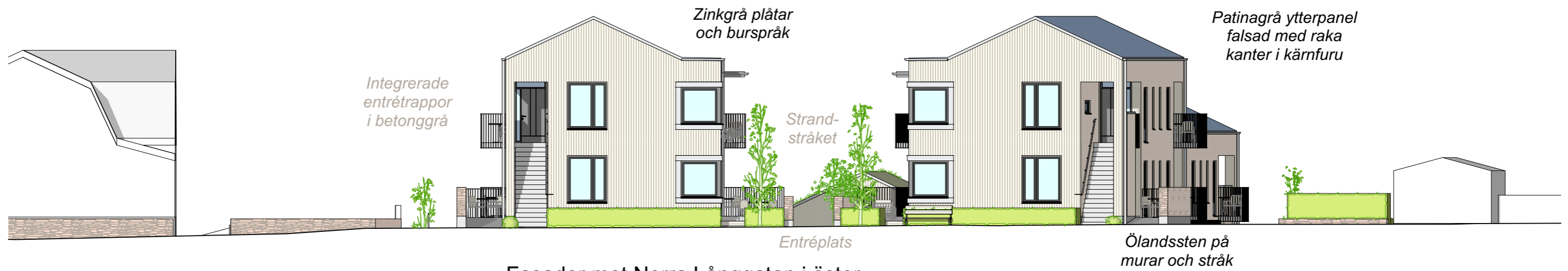


Övernattningslägenhet
Skala 1:100

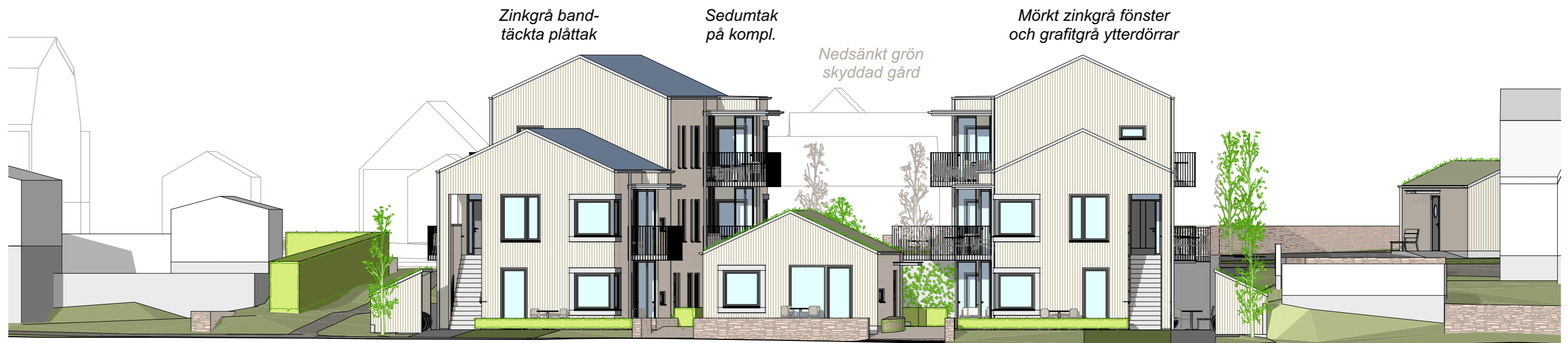


Cykel förråd o Miljörum
Skala 1:100

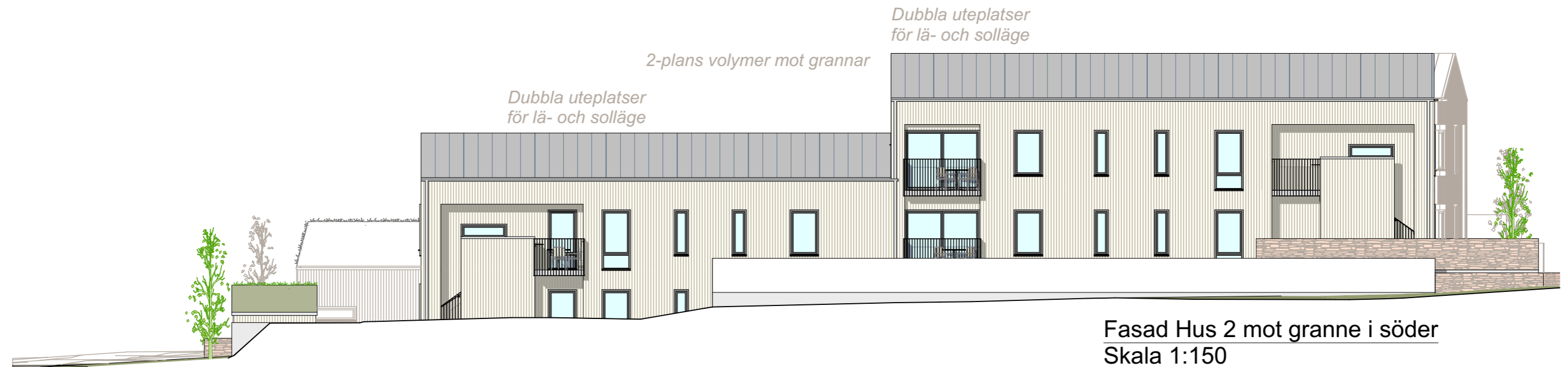
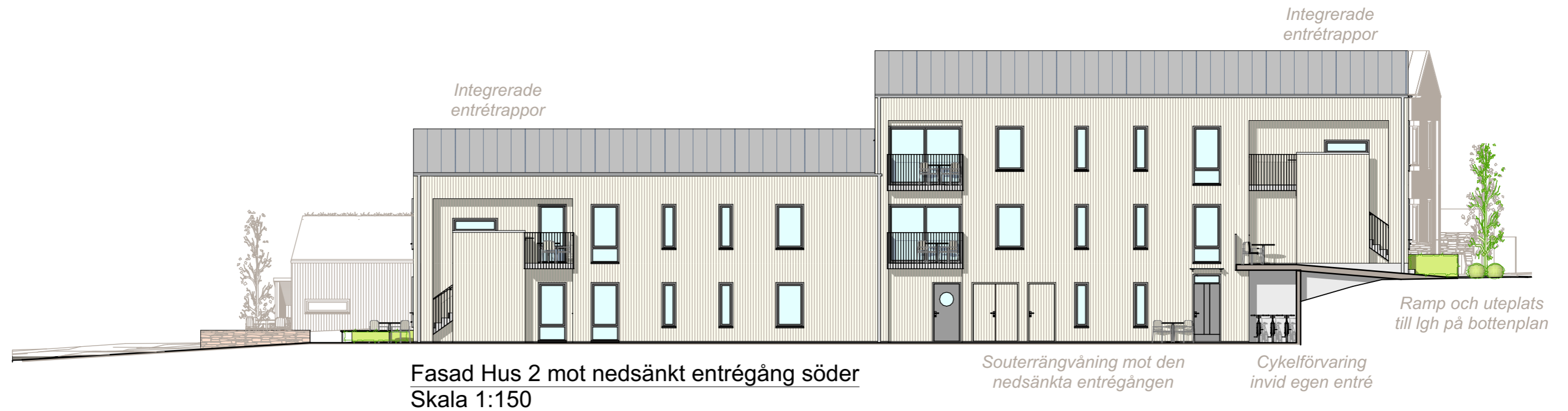


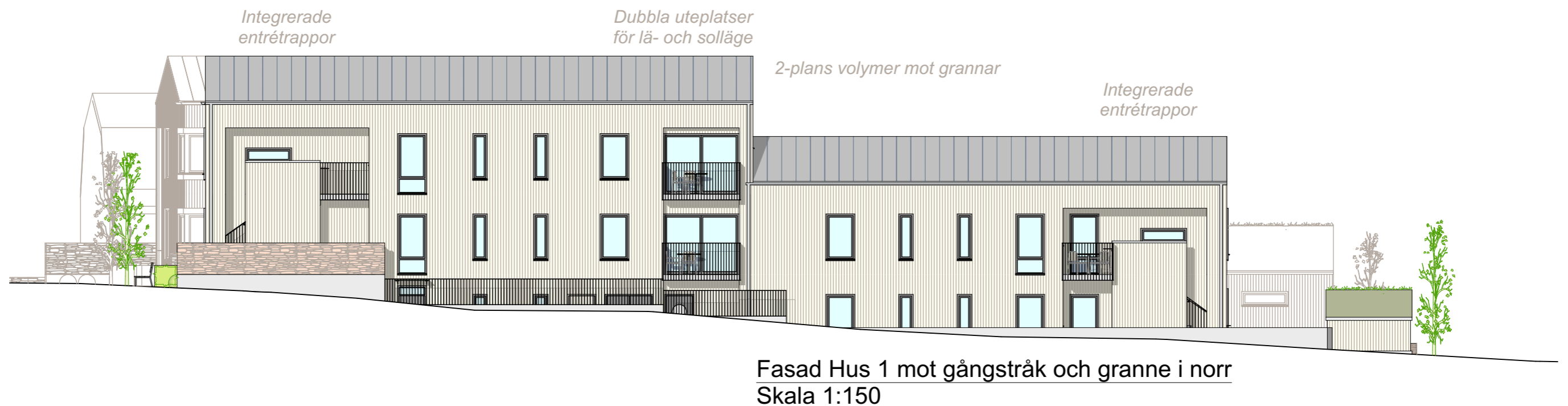


Fasader mot Norra Långgatan i öster
Skala 1:150



Fasader mot Sandviks Bruksgata o havet i väster
Skala 1:150







Fasadöversikt mot Stenhuggarvägen i söder
Skala 1:300



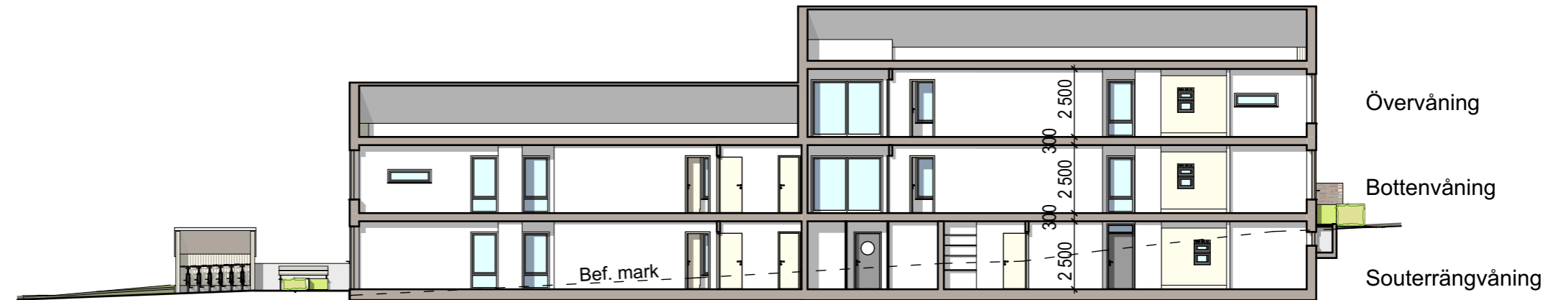
Fasadöversikt mot Norra Långgatan i öster
Skala 1:300



Fasadöversikt mot Sandviks Bruksgata i väster
Skala 1:300



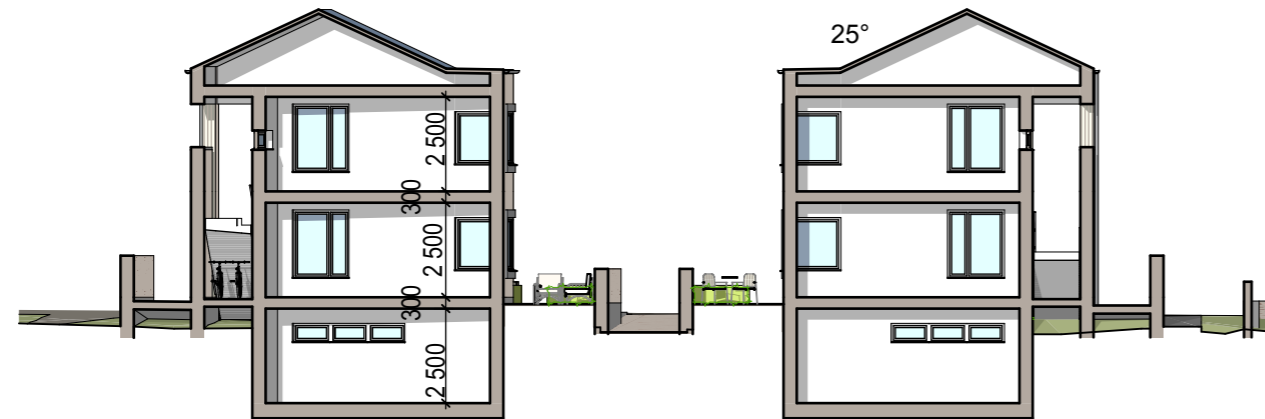
Sektion A-A - Hus 2
Skala 1:200



Sektion B-B - Hus 1
Skala 1:200



Sektion C-C - "Strandstråket"
Skala 1:200



Sektion D-D - Hus 1 o 2
Skala 1:200



Sektion G-G - Övernattningslägenhet
Skala 1:200

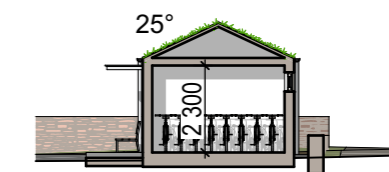
Övervåning

Bottenvåning

Souterrängvåning



Sektion E-E - Hus 1 o 2
Skala 1:200



Sektion H-H - Cykelfrd o Miljöhus
Skala 1:200



Sektion F-F - Hus 1 o 2
Skala 1:200